

**Fixed—Wing:**

- The pattern for Runway 25 is standard left-hand.
- 45 entry remain north of 91 freeway.
- Pattern altitude is 1533’ MSL (1033’ AGL)
- While not required, good pilot technique is to announce on UNICOM (122.7) before entering pattern. Please announce entry on 45 degree leg, downwind, base and final.
- Preferred pattern entry is level flight at 45 degrees to downwind so as to be on downwind at mid-point of the runway between the railroad tracks and 91 freeway.
- **DO NOT** unnecessarily extend the downwind leg of Runway 25. If traffic forces a long downwind, shorten the base leg, and fly down the Temescal Wash. **Stay south of the housing area final approach. Straight in approach is not recommended!**
- When departing Runway25, make no crosswind or left turns under 1200’ MSL. Look for helicopter traffic on your left.
- Fixed-wing noise abatement departure procedures for Runway 7 require all departing aircraft to make a 15 degree right turn to follow the Temescal Wash. Do not fly over noise sensitive housing areas. Right turn only, after reaching 1533’ MSL (1033’ AGL). No left turns allowed.
- Due to traffic congestion, no touch and go landings are allowed on Saturdays, Sundays, or holidays, between the hours of 10:00 AM and 4:00 PM.
- Avoid low Approach... use VASI.

**Helicopters:**

- Use UNICOM (122.7) and fly 1033’ (533’ AGL) pattern, south of the runway, inside of fixed-wing and inside/over of railroad tracks..
- On departure, climb to 800’ MSL prior to any turns.
- Climbs and descents within airport boundaries/fence.
- Utilize quiet departure and arrival techniques. Noise sensitive areas are in close proximity to airport and endangered / protected birds nesting south and west of the runway.
- Landing area in the grass strip immediately south of the public roadway and just west of the helipads at midfield. Hover practice in the vicinity just east of the helipads only.
- Fueling is at midfield just south of the parallel taxiway.
- For restaurant, park on grass area as stated above. Do not park east of the airport office.
- No helicopter training of hover practice allowed at the west end along the tree line due to endangered and protected birds.
- Helicopter landing and departure areas are not Lighted.

*Please review and follow all procedures*

Be a  
**SAFE** Pilot  
and a **GOOD**  
Neighbor

**WELCOME TO THE CORONA MUNICIPAL AIRPORT**



**Airport Map and Flight Procedures**

Field Elevation 533 Feet  
AWSS 132.175 / (951) 340-4764  
UNICOM 122.7

Visual Flight Patterns

General Aviation  
Pattern Altitude 1533 feet  
Helicopter  
Pattern Altitude 1033 feet

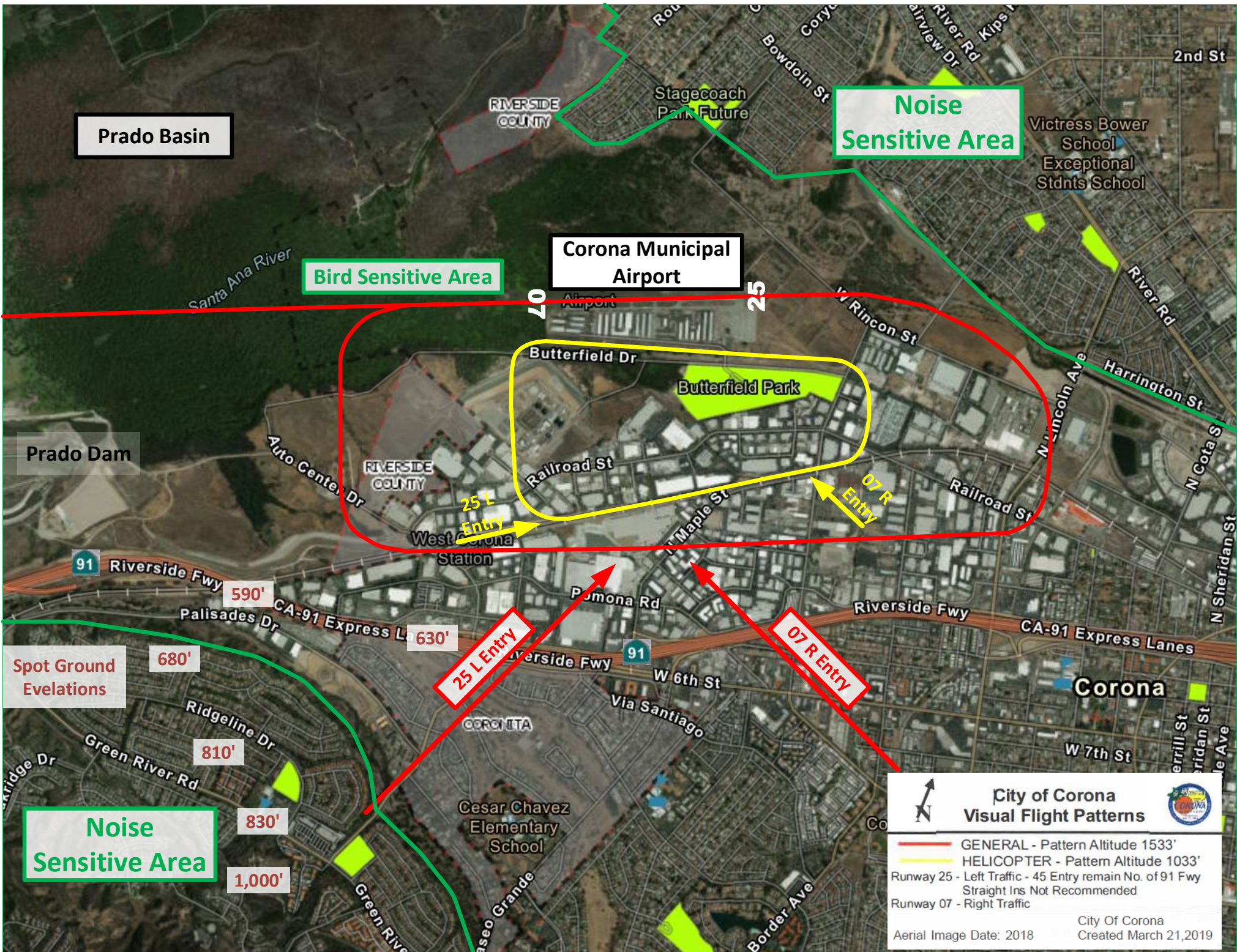
Runway 25—Left Traffic  
Straight-Ins NOT Recommended  
Runway 07—Right Traffic

**Noise Abatement Procedures**

Corona Municipal Airport experiences extremely heavy use, particularly on weekends, with a large variety of aircraft (with/without radios) and pilots with all types of ratings and skill levels, including student pilots from local and neighboring airports. also, many residential developments are in close proximity of our airport. Therefore, we must insist that FAA and local regulations be observed and that our pilots be good neighbors in the interest of safety and public relations.

For more information, contact the Airport Manager at 951-736-2289





Prado Basin

Bird Sensitive Area

Corona Municipal Airport

Noise Sensitive Area

Prado Dam

Spot Ground Elevations

Noise Sensitive Area

**City of Corona Visual Flight Patterns**

- GENERAL - Pattern Altitude 1533'
- HELICOPTER - Pattern Altitude 1033'

Runway 25 - Left Traffic - 45 Entry remain No. of 91 Fwy  
Straight Ins Not Recommended

Runway 07 - Right Traffic

Aerial Image Date: 2018  
City Of Corona Created March 21, 2019

590'

630'

680'

810'

830'

1,000'

25 L Entry

07 R Entry

